



HEADQUARTERS FIGHTER WEAPONS SCHOOL
NELLIS AIR FORCE BASE
LAS VEGAS, NEVADA

Classification **UNCLASS**
Author: FWS/CC
Date...*23 July 1957*.....

MISSION 04 ORDERS

1. OVERVIEW.

1.1. Mission overview:

In today's sortie you will perform two Ground Controlled Intercepts at high altitude. You will be on standby at the ramp, and follow GCI instructions. Once Visual contact with the enemy bomber is established, perform a proper missile attack.

1.2. Objectives:

- 1.2.1. Obtain a valid kill;
- 1.2.2. Stay offensive.

1.3. Mission Commander:

Capt. John R. Boyd.

2. AREA OF OPERATIONS.

2.1. Working areas:

Lee Corridor, Range 62, Range 63, Range 64,
Range 65, R-4808C, R-4808E.

2.2. Restricted areas:

R-4808A, R-4809A.

2.3. Environmental conditions:

Standard.

3. STATUS OF ENEMY FORCES.

3.1. Ground forces and AAA:

NIL.

4. MISSION EMPLOYMENT BRIEFING.

4.1. Flight:

4.1.1. Pontiac 01 (2x F-86F)

4.1.1.1. Pontiac 3-1: LT William H. Spencer.

4.2. Fuel:

4.2.1. Internal tanks: 1,554 lbs;

4.2.2. External tanks: 1,602 lbs;

4.2.3. BINGO fuel: 800 lbs.

4.3. Ground operations:

Use standard procedures.

4.4. Departure:

GASS PEAK departure.

4.5. Enroute:

4.5.1. Mission freq.: Channel 1 (main),
Channel 11 (alternate);

4.5.2. GCI (BARON) freq.: Channel 9;

4.5.3. Formation: Echelon.

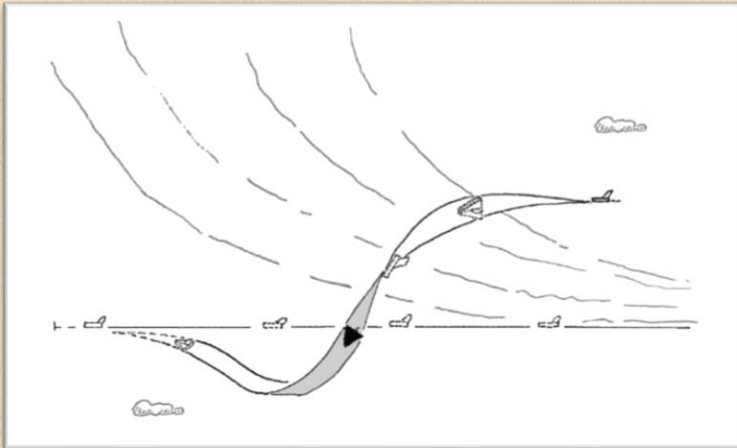
4.6. Engagement tactics:

4.6.1. Sequence of events:

- 4.6.1.1. Fence in;
- 4.6.1.2. Vectored intercept at 36,000 feet;
- 4.6.1.3. Non-vectored intercept at 36,000 feet;
- 4.6.1.4. Fence out.

4.6.2. Parameters:

- 4.6.2.1. Roll-side attack;
- 4.6.2.2. Starting altitude: 38,000 feet;
- 4.6.2.3. Valid kill: valid GAR-8 parameters.



Roll-Side Attack

4.6.3. Knock-it-offs:

- 4.6.3.1. ROE;
- 4.6.3.2. Valid kill;

4.6.3.3. Five minutes after the beginning
of each iteration.

4.7. Egress plan (route, mutual support
agreements):

NIL.

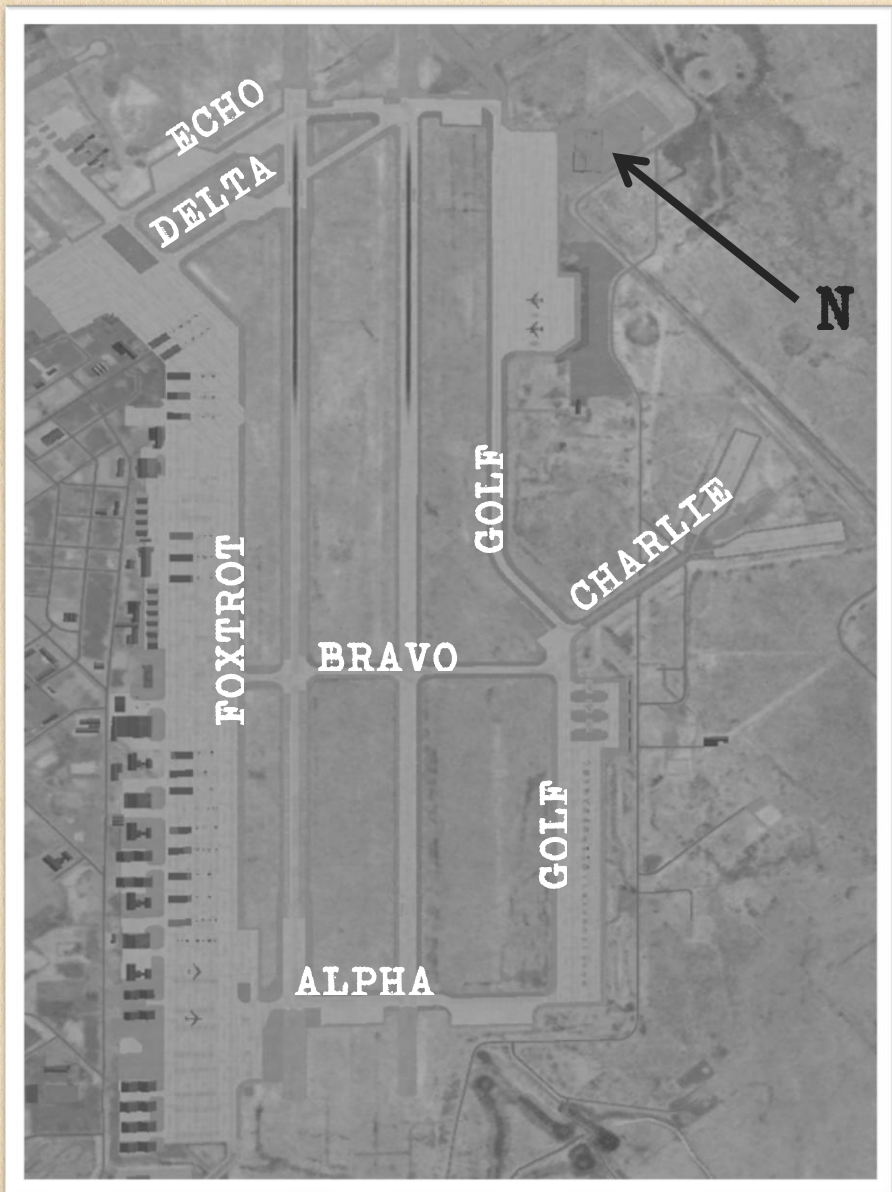
4.8. Recovery:

GASS PEAK recovery.

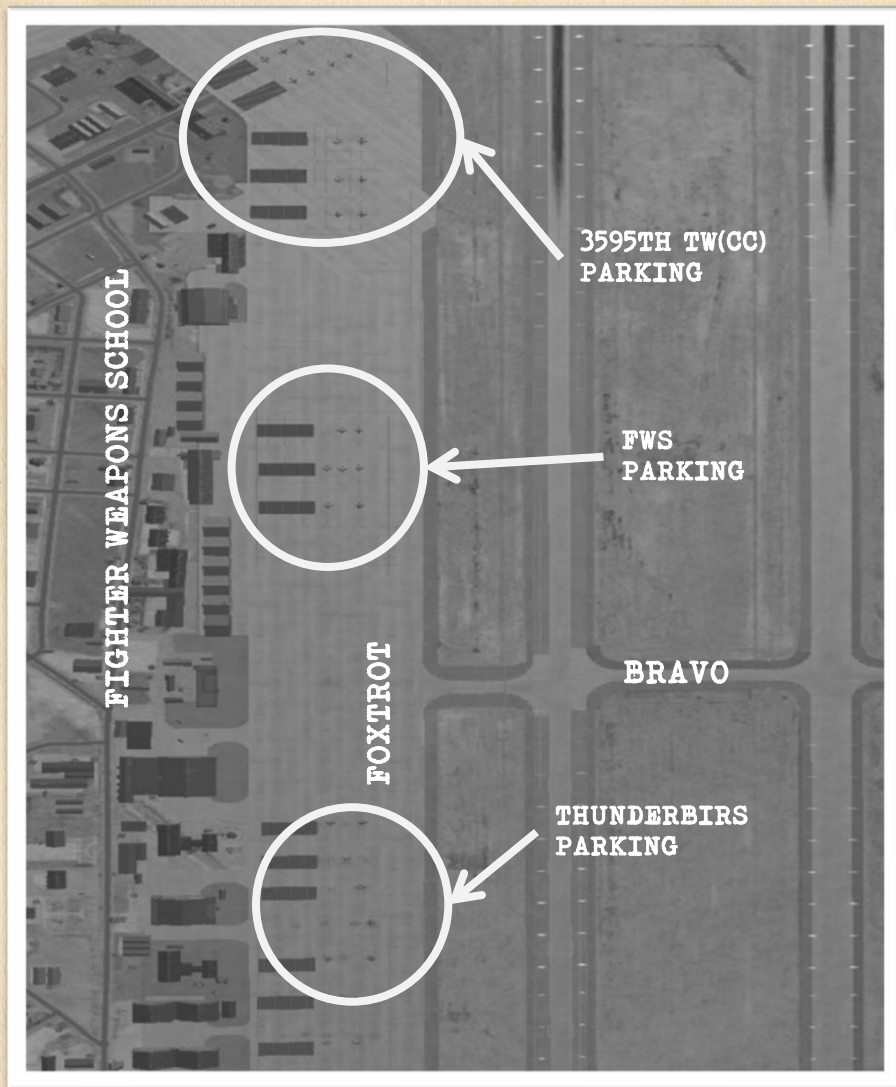
LIST OF ANNEXES

ANNEX "A"	NAVIGATION
ANNEX "B"	COMMUNICATIONS

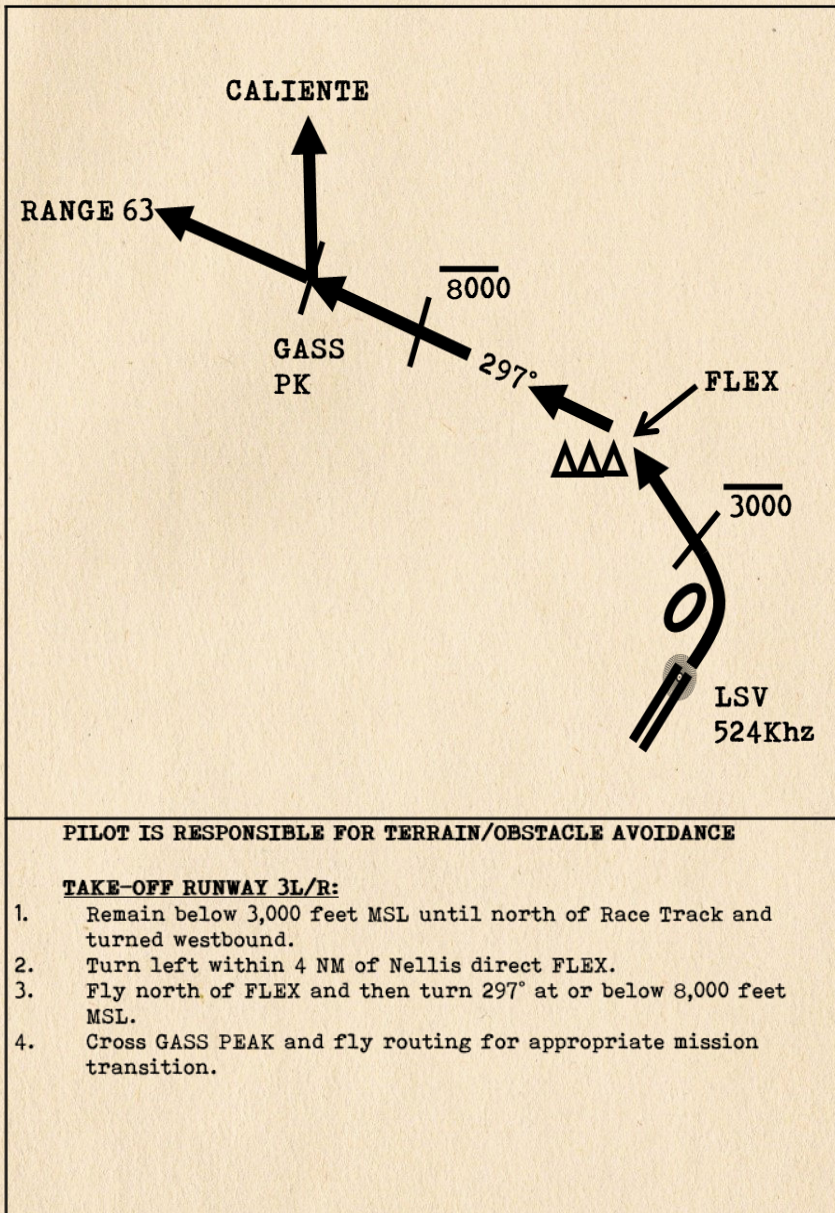
NELLIS AIR FORCE BASE



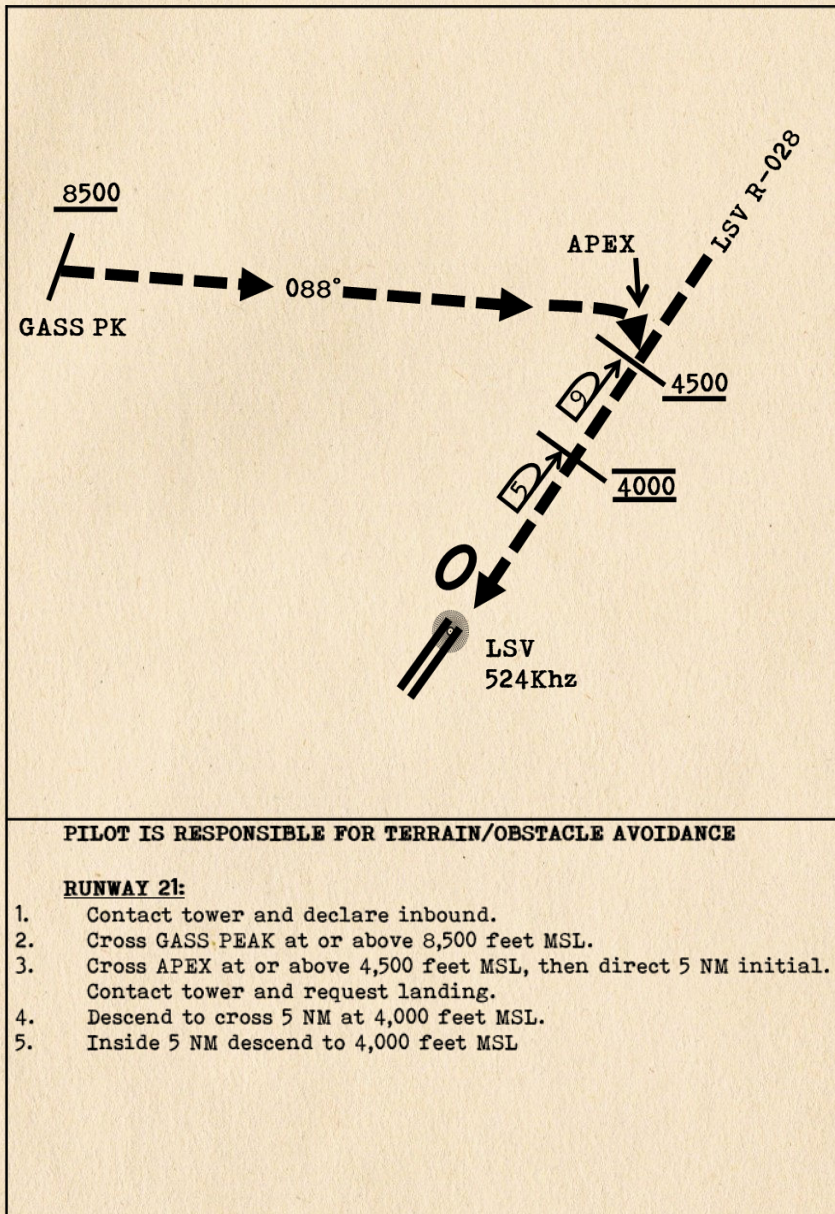
FIGHTER WEAPONS SCHOOL PARKING



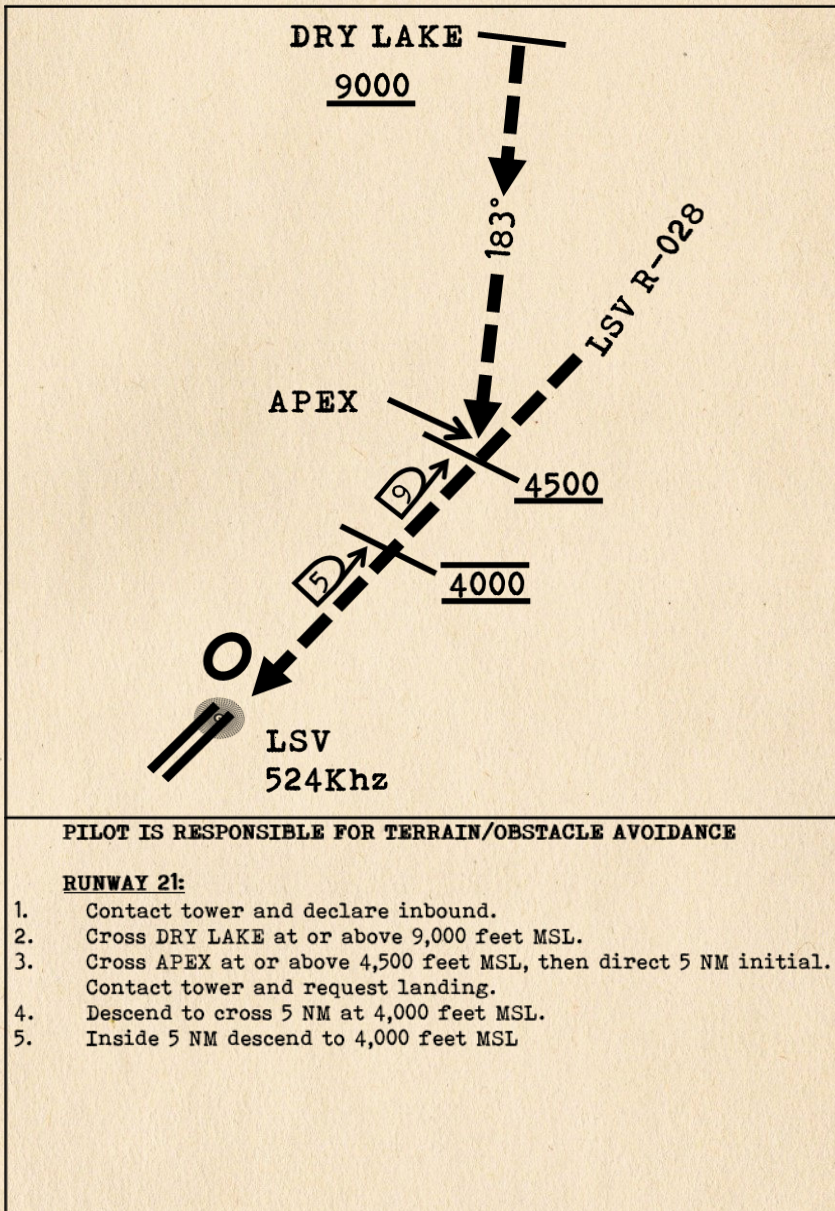
GASS PEAK DEPARTURE



GASS PEAK RECOVERY



DRY LAKE RECOVERY



CHANNELIZATION

RADIO			NAVIGATION		
CH	NAME	FREQ.	NDB	FREQ.	MORSE
G	GUARD	243.000 Mhz	///	///	///
1	SQUADRON MAIN	260.100 Mhz	///	///	///
2	Nellis AFB	327.000 Mhz	LSV	524 Khz	.-. / ... / ...-
3	Creech AFB	360.600 Mhz	INS	387 Khz	.. / -. / ...
4	Tonopah Test Range Airfield	257.950 Mhz	TQQ	478 Khz	- / --.- / --.-
5	Groom Lake	250.050 Mhz	GRL	618 Khz	--. / .-. / .-..
6	McCarran International Airport	257.800 Mhz	LAS	316 Khz	.-. / .- / ...
7	North Las Vegas	360.750 Mhz	///	///	///
8	SQUADRON AUX	328.500 Mhz	///	///	///
9	BARON	270.025 Mhz	///	///	///
10	BLACKJACK	377.800 Mhz	///	///	///
11	///	///	///	///	///
12	///	///	///	///	///
13	///	///	///	///	///
14	///	///	///	///	///
15	///	///	///	///	///
16	///	///	///	///	///
17	///	///	///	///	///
18	///	///	///	///	///

NAVAIDS

NAME	LOCATION	FREQ.	MORSE
MCY	Mercury	326 Khz	-- / -.-. / -.-
LSV	Nellis AFB	524 Khz	.-. / ... / ...-
BLD	Boulder	416 Khz	-... / .-. / -..
LAS	McCarran International	316 Khz	.-. / .- / ...
MMM	Mormon Mesa	446 Khz	-- / -- / --
BTY	Beatty	714 Khz	-... / - / -.-
GRL	Groom Lake AFB	618 Khz	--. / .-. / .-..
TQQ	Tonopah Test Range Airfield	478 Khz	- / --.- / --.-
ILC	Mount Wilson	365 Khz	.. / .-. / -.-
CYS	Crystal Springs	577 Khz	-.-. / -.- / ...
TBL	T-Bird Lake	642 Khz	- / -... / .-..
INS	Creech AFB	387 Khz	.. / -. / ...